

# ES

ES 300h



Overseas model shown. Australian specifications and features may differ. See your Lexus dealer for details.





ES	P03
CONCEPT	P07
DESIGN	P10
PERFORMANCE	P13
FEATURES	P20
ADVANCED TECHNOLOGY	P31
F SPORT	P35
TAKUMI	P41
LEXUS OWNERSHIP SOLUTIONS	P43
COLOURS AND TRIMS	P45
MAIN FEATURES	P49
SPECIFICATIONS	P51



















# LEXUS — CONCEPT



Is it possible to experience extraordinary joy in daily life? We created the ES to do just that. To the regular tasks of moving you from place to place, it adds pleasure, comfort, and peace of mind, turning the routine into special experiences. The rejuvenated ES injects excitement into your everyday.



## — CONCEPT



We further refined the renowned quietness and ride comfort of the ES's spacious interior, then heightened the experience of driving pleasure. Even as you relax in comfort, the elegant design catches eyes on the street. As Lexus's unique luxury sedan, the ES goes a step beyond to provide premium comfort.



## — CONCEPT





# LEXUS — DESIGN



Given the beautiful proportions, low centre of gravity, and coupe-like styling, you would never guess at the spacious interior. It delivers an emotional design that excites occupants, while capturing the attention of people passing by.



## — DESIGN



### Exterior

The flowing roof line that slopes towards the rear complements the balanced proportions and accentuates the wide, low stance. The sharp front face and rich contrast of the side profile contribute to a powerful presence that invites you to experience exhilarating driving.



## — DESIGN



### Interior

The interior provides a comfortable, human-centred space. Controls in the snug cockpit have been laid out so that drivers don't need to change their line of sight or posture, while passengers enjoy a calm, relaxing space with ample legroom.



# LEXUS — PERFORMANCE



Simply depress the accelerator or turn a corner, and you'll realise the ES refines the basics of performance. The smooth acceleration and optimised cornering control realise response that resonates with the driver's feelings. Even turning at an intersection you often drive through, you'll experience a warm thrill of excitement.



## — PERFORMANCE



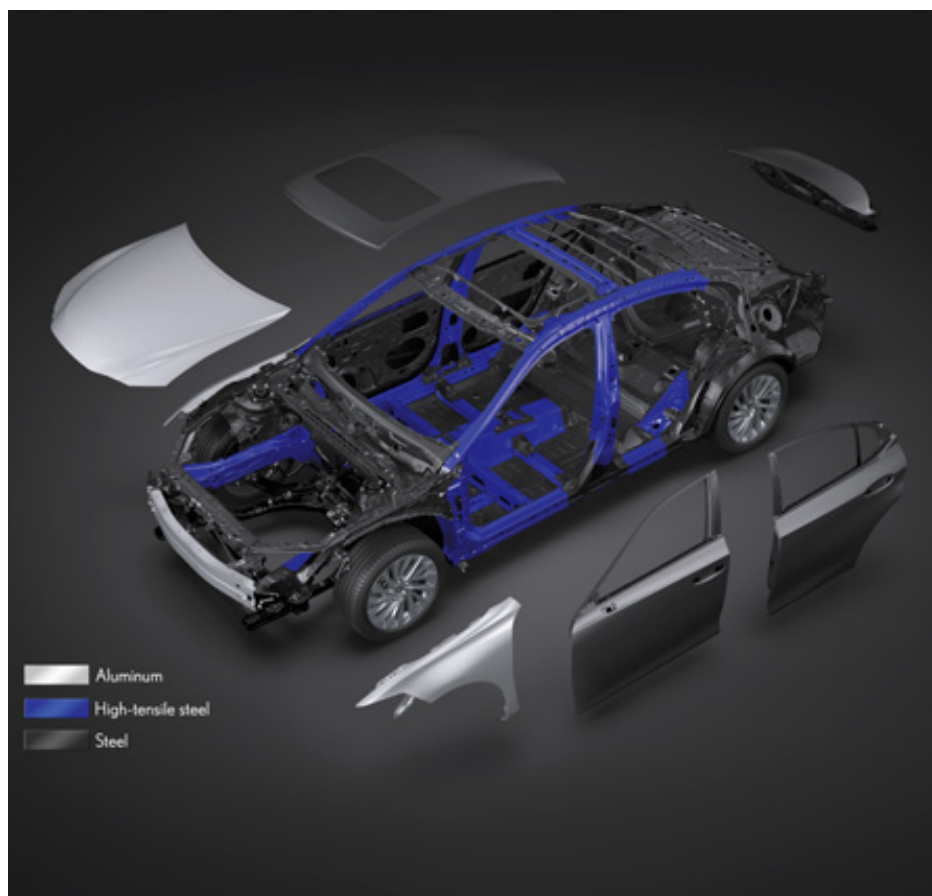
### **GA-K (Global Architecture-K) platform**

Lexus developed the platform for the ES from scratch to create the foundation for excellence in core criteria, including design, dynamic performance, ride quality, quietness, and safety. For dynamic performance, the location and angle of the steering wheel and pedals were reviewed to create a posture that supports easy driving. To augment the vehicle's excellent DNA with its low centre of gravity and uniform lateral weight distribution, the geometry of the high-rigidity body and chassis were optimised to deliver excellent straight-line driving stability, stable cornering, and braking stability. In addition, the integration of advanced features including parallel rack EPS (Electric Power Steering), AVS (Adaptive Variable Suspension system),<sup>1</sup> and performance dampers provide secure and pleasant handling that closely responds to the driver's intentions. Finally, we aggressively blocked vibrations and reduced every aspect of sensitivity to vibration to reduce noise and vibrations from the engine and tyres, to provide a comfortable ride with outstanding quietness.

<sup>1</sup>Available on ES 300h F Sport models only.  
Overseas model shown. Australian specifications and features may differ. See your Lexus dealer for details.



## — PERFORMANCE



### Multi material body

The ring-shaped body structure helps to reduce body torsion. A V-shaped brace behind the rear seats contributes to coupling rigidity for excellent stability. In addition, body rigidity is enhanced by the extensive use of advanced technologies including laser screw welding and structural body adhesives. Optimising the use of hot-stamp and high-tensile steel in key body components also reduces weight while contributing to excellent collision safety.



### EPS (Electric Power Steering)

The parallel rack electric power steering system provides crisp, clean response as soon as you start turning the steering wheel. The steering column offers enhanced rigidity and excellent steering feel.

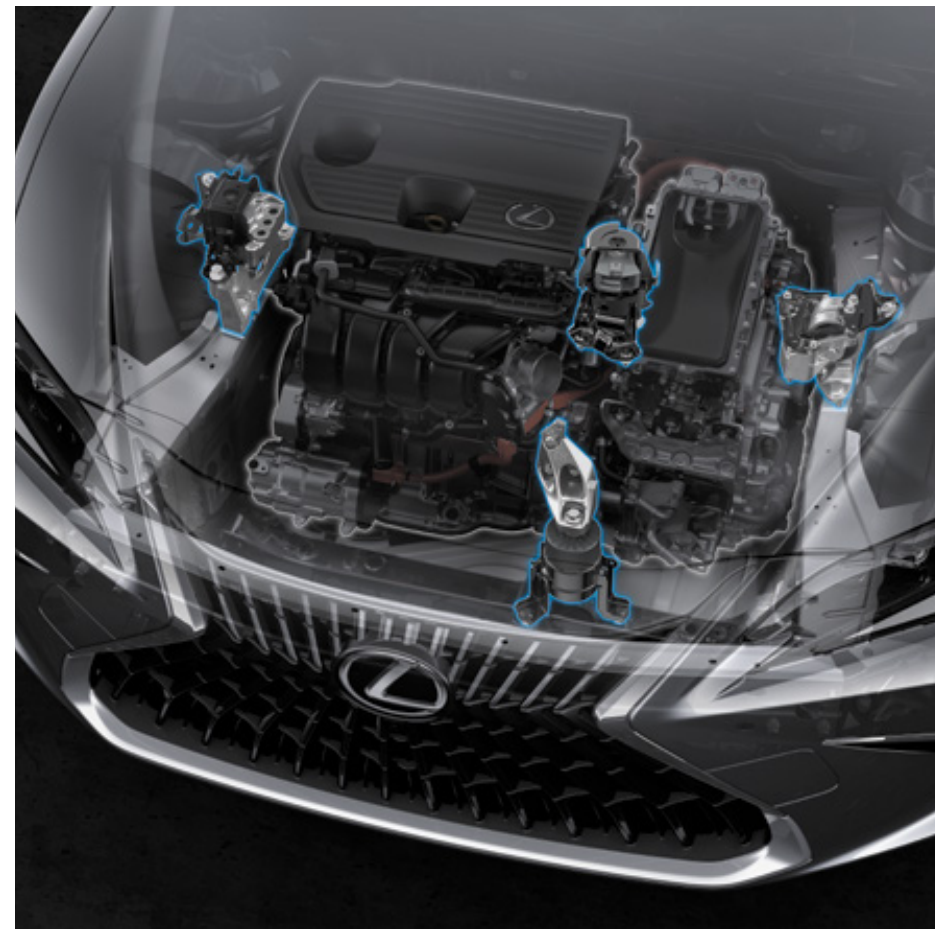


## — PERFORMANCE



### Performance dampers<sup>1</sup>

Performance dampers in the front and rear boost the feeling of unity between car and driver. The dampers quickly absorb body flex and minuscule vibrations while driving to sharpen handling characteristics and contribute to the excellent ride comfort and quietness.



### Engine mount

Large mounts positioned in the front and rear of the engine decrease vibrations at engine start-up. In addition, they reduce idling vibration, low-frequency engine noise during low-rpm driving, and engine noise during high-rpm driving. By suppressing vibrations transmitted from the engine, they also contribute to the excellent ride comfort and quietness.

<sup>1</sup>Available on F Sport & Sports Luxury models only.

Overseas model shown. Australian specifications and features may differ. See your Lexus dealer for details.



## — PERFORMANCE



### Aerodynamics

Aerodynamic performance is seamlessly integrated into the elegantly-shaped silhouette so that air flows from the rear seats to the trailing edge of the boot. Fins on the underbody cover and rear combination lamps reduce air resistance, contributing to the quiet interior and excellent fuel efficiency. The controlled air flow also enhances driving stability.



### Suspension

The geometry of the McPherson strut front suspension was optimised to realise excellent steering response and turning stance, together with premium ride comfort. The arm positions on the trailing-arm double-wishbone rear suspension were optimised to smoothly handle uneven road surfaces, providing an excellent blend of handling stability and ride comfort. In addition, the shock absorbers on both the front and rear suspension incorporate swing-valve shock absorbers that respond to even minuscule movements, to provide an exceptionally flat feel when starting up, as well as excellent straight-line stability when driving at speed.

<sup>1</sup>Available on F Sport & Sports Luxury models only.

Overseas model shown. Australian specifications and features may differ. See your Lexus dealer for details.



## — PERFORMANCE



### Brakes

Engineered for excellent braking force, control and response, the brakes provide intuitive response to the driver's input, feeding driving pleasure by supporting exciting driving with peace of mind. In addition, the ES is equipped with an electric parking brake, further enhancing easy operation and driving enjoyment.



### Drive mode select

Drive mode select provides integrated control of multiple systems to let you tune performance to suit your driving style. You can select and change between three modes: Eco, Normal, Sport.



## — PERFORMANCE



### Lexus Hybrid Drive

The hybrid system aims to transform people's image of hybrid performance even as it realises exceptional fuel efficiency. By combining the excellent response of the 2.5-litre L4 engine with a compact, small lightweight battery and sophisticated control capabilities, it delivers a smooth natural acceleration feel, responding instantly to accelerator inputs.



### 2.5-litre L4 engine (A25A-FXS/A25B-FXS)

The 2.5-litre L4 engine delivers a sophisticated blend of dynamic performance, fuel efficiency and environmental friendliness. Reviewing the engine's basic design, adopting a longer stroke and high-efficiency intake ports, and enhancing the flow of air in the cylinders realise high-speed combustion. Additional refinements include multi-hole direct injectors, a continuously variable-capacity oil pump, a variable cooling system, and VVT-iE on the intake-side valves.<sup>1</sup>

<sup>1</sup>VVT-iE: Variable Valve Timing-intelligent by Electric motor.

Overseas model shown. Australian specifications and features may differ. See your Lexus dealer for details.



# LEXUS — FEATURES

Refining the advanced levels of luxury and utility experienced in the previous generation model enables the driver and passengers to enjoy premium comfort, for a quality of luxury comfort that is consistently a step ahead.



## — FEATURES

The sharp face is focused on the Lexus spindle grille, a core design cue that is heightened by the compact LED headlamps, that integrate innovative BladeScan AHS headlamps.<sup>1</sup> The DRL (Daytime Running Lamps) emit an L-shaped light that radiates a smart and fearless expression. L-shaped LED rear combination lamps further embed the distinctive Lexus identity. Advanced features including acoustic glass and seatback silencers contribute to the extremely low noise levels in the cabin, further enhancing this relaxing private space. It is a refined expression of Lexus hospitality that remains ahead of its time in shaping perceptions of luxury.



### 3-eye Bi-Beam LED headlamps<sup>1</sup>

The slim, square design of the 3-eye Bi-Beam LED headlamps projects a sharp futuristic look, heightened by the thin light beam design of the turn signal lamps. It integrates innovative BladeScan AHS headlamps to help provide excellent night-time visibility, to help support early recognition of pedestrians and road signs for reliable, stress-free driving.



### LED rear combination lamps

The L-shaped rear combination lamps reinforce the ES's Lexus identity. The three-dimensional design was engineered to combine high visibility with distinctive style.

<sup>1</sup>Available on F Sport and Sports Luxury models only.  
Overseas model shown. Australian specifications and features may differ. See your Lexus dealer for details.



## — FEATURES



### Moonroof

The moonroof lets in an abundance of light, adding to the spacious airy feeling in the cabin. It opens and closes, tilts up and down at the touch of a button. A low-speed motor provides quiet operation. For safe operation during closing, the moonroof stops temporarily in a safe position, and requires a further press of the close switch to fully close it.



### Hands-free power boot<sup>1</sup>

Even if both hands are full, when carrying the Electronic Key you can open and close the boot automatically by moving your foot under the rear bumper and out again.

<sup>1</sup>Available on ES 300h Luxury + EP, and all F Sport & Sports Luxury models only.  
Overseas model shown. Australian specifications and features may differ. See your Lexus dealer for details.

## — FEATURES



### Rear bumper

The character lines of the side silhouette converge to give the rear a dynamic presence. Combining high rigidity with excellent recyclability, the rear bumper accentuates this presence, endowing it with a strong sense of stability.



### Acoustic glass

The windshield and front door windows are fitted with a special acoustic glass with excellent sound insulating properties.



## — FEATURES



### EMV touch displays/meter/colour head-up display

The EMV (Electro Multi-Vision) enables simple touch operation, with a high-resolution wide screen that is easy-to-read even when the menu and maps are displayed simultaneously. Ergonomics helps refine the display's position in front of the driver for easy viewing and operation, optimising the angle and the position of the unit to minimise intrusion into the driver's line of sight. The result is an interface that is easy to focus on and enables intuitive fingertip operation, while maintaining forward visibility and a comfortable driving position. The EMV displays incoming calls, audio system and other information, and coordinates display of select information with the multi-information display integrated into the colour TFT (Thin Film Transistor) Optitron meter and the large colour head-up display positioned in the driver's line of sight. With the latest Apple CarPlay® and Android Auto™<sup>1</sup> compatibility, you can access the same familiar interface from your iPhone® or Android.™ Simply connect your phone to get directions, make calls, send and receive messages via Siri® or Google Assistant.™ Speak to your dealer about device compatibility.

<sup>1</sup>Only Qi-supported devices compatible. Refer to device manufacturer. May require additional purchase of accessory to support wireless charging. Requires compatible device, USB connection, mobile data, network reception & GPS signal. Mobile usage at user's cost. Apps subject to change. For details see [lexus.com.au/connectivity](https://lexus.com.au/connectivity). All images indicative only. Functionality varies depending on device. CarPlay®, iPhone® and Siri® are trademarks of Apple, Inc. registered in the U.S. and other countries. Android,™ Android Auto™ and Google Assistant™ are trademarks of Google LLC. Overseas model shown. Australian specifications and features may differ. See your Lexus dealer for details.

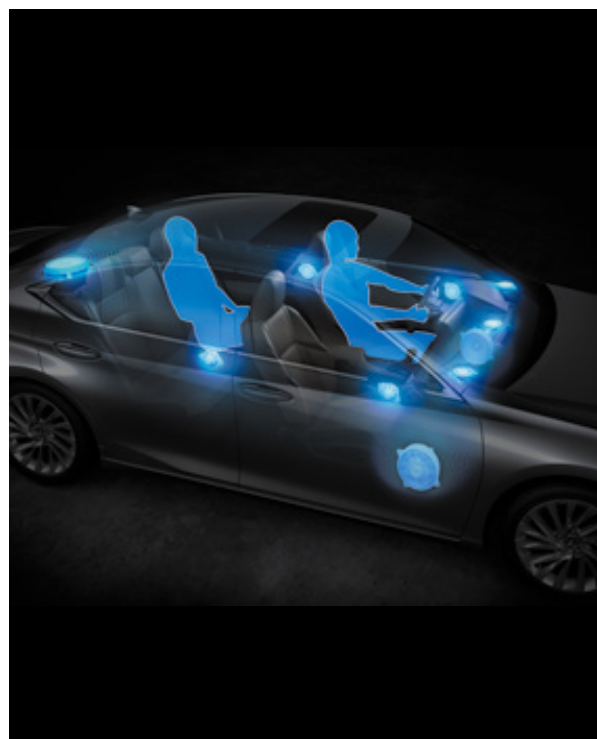
## FEATURES



Image is indicative only.

### Active Noise Control<sup>1</sup>

Active Noise Control uses engine rpm and a dedicated microphone to identify and reduce muffled engine sound by outputting an opposite-phase sound from the speakers to cancel it out, significantly enhancing quietness in the cabin.



### Mark Levinson<sup>®2</sup> Premium Surround Sound System<sup>3</sup>

Adopting a PurePlay layout, 7 Unity speakers with identical performance are arranged along the shoulder line which runs from the instrument panel to the door tops, effectively surrounding the cabin. By placing speakers close to occupants' ears so there are fewer obstructions, this layout realises clear sound, even in the rear seats. The rich, powerful low-frequency sounds from the woofers combine with advanced sound technology to provide a crisp audio experience that envelops passengers.



### nanoe-X<sup>®2</sup>

The climate control system integrates advanced nanoe-X technology, which releases microscopic, negatively-charged "nanoe-X" particles containing 10 times the OH radicals of conventional nanoe systems, helping to purify the cabin air and effectively deodorise the seats and upholstery. The high moisture content of ions displays a healthy moisturising effect on skin and hair.

<sup>1</sup>Only available on ES 300h.

<sup>2</sup>Product and company names are trademarks of their respective owners.

<sup>3</sup>Available on F Sport + Enhancement Pack and Sports Luxury models only.

Overseas model shown. Australian specifications and features may differ. See your Lexus dealer for details.



## — FEATURES



### Wireless charger

For wireless charging of batteries, simply place Qi-compatible smartphones and electronic devices on the charging tray in the centre console box.



### Console box

The spacious utility box in the console box integrates two USB charging ports for convenient charging and use of portable devices while you are on the move. A lip in the box edge enables smooth routing of cables, to keep your mobile phone close at hand while it is charging.

## — FEATURES



### Lexus Climate Concierge

The powerful energy-efficient air conditioning system provides either 2-zone or 3-zone<sup>1</sup> independent control of the temperature in the front and rear seats. A control panel for rear seat passengers is conveniently located in the rear centre armrest.<sup>1</sup>



### Rear armrest and multi-operation panel<sup>1</sup>

The rear seats feature a centre armrest with convenient cupholders. An integrated control panel lets occupants adjust the audio system, seat recline and other settings, further enhancing passenger pleasure.

<sup>1</sup>Available on Sports Luxury models only.

Overseas model shown. Australian specifications and features may differ. See your Lexus dealer for details.



## — FEATURES



### **Boot-through**

Boot-through functionality enables the carrying of longer items that won't fit in the boot.



### **Power rear seats<sup>1</sup>**

The reclining power rear seats provide up to 8° of recline to create an even more relaxing space.

<sup>1</sup>Available on Sports Luxury models only.

Overseas model shown. Australian specifications and features may differ. See your Lexus dealer for details.

## — FEATURES



### **LED ambient illumination<sup>1</sup>**

Subtle Lexus hospitality is seen in the elegant and functional design of the instrument panel and its real stitching detail. The use of LED ambient illumination to indirectly light the lower instrument panel and front and rear door trim, creates a feeling at night of being gently enveloped. The brightness can be adjusted to suit your preference.

<sup>1</sup>Available on ES 300h Luxury + EP, and Sports Luxury models + Walnut/Bamboo ornamentation only.  
Overseas model shown. Australian specifications and features may differ. See your Lexus dealer for details.



## — FEATURES



### Rear door<sup>1</sup> and rear window sunshades<sup>2</sup>

Sunshades for the rear door and rear quarter windows, and a power sunshade for the rear window provide shade and privacy in the rear seats. For a clear field of view when reversing, the rear window sunshade automatically lowers when reverse gear is engaged.

<sup>1</sup>Available on ES 300h Luxury + EP and ES 300h Sports Luxury models only.

<sup>2</sup>Available on ES 300h F Sport, ES 300h Luxury + EP and ES 300h Sports Luxury models only.

Overseas model shown. Australian specifications and features may differ. See your Lexus dealer for details.

# ADVANCED — TECHNOLOGY

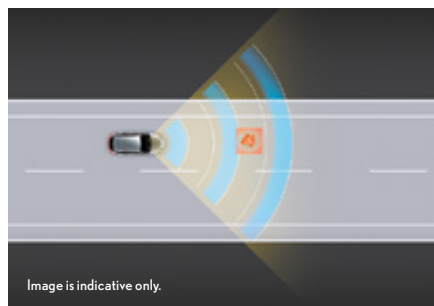


The ES's exciting performance is underpinned by active and passive safety measures that utilise advanced technologies to deepen your peace of mind.



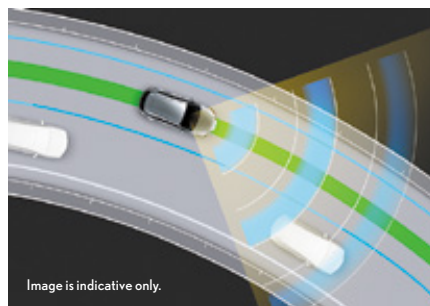
## — ADVANCED TECHNOLOGY

LEXUS SAFETY SYSTEM + 



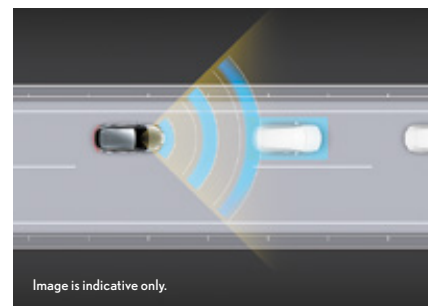
### Pre-Collision Safety system (PCS) with Pedestrian and Daylight Cyclist Detection<sup>1</sup>

When the millimetre-wave radar and monocular camera sensors detect a collision with a vehicle ahead, a pedestrian during the day or at night, or a bicyclist during the day is likely, it is designed to alert the driver and activate pre-collision brake assist when the driver depresses the brake pedal. If the driver cannot depress the brake pedal, it activates pre-collision braking. In addition, if it detects an oncoming vehicle, it decelerates and helps to mitigate effects of the collision. In the same way, intersection turning assist helps the driver to detect a vehicle or pedestrian in front when turning at an intersection. If the emergency steering assist system detects a collision with a vehicle, pedestrian or bicyclist ahead is likely, there is sufficient space for the vehicle to be steered within its lane and the driver has begun an evasive steering manoeuvre, it assists steering to help enhance vehicle stability and prevent lane departure.



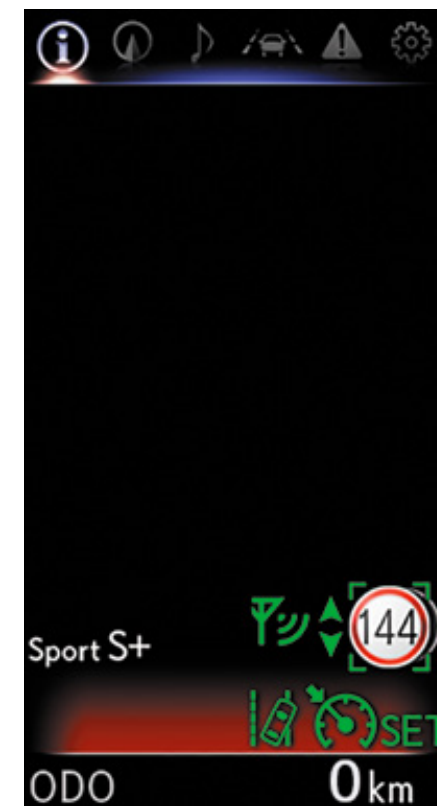
### LTA (Lane Tracing Assist)<sup>1</sup>

When Lane Tracing Assist with enhanced lane recognition is activated, it alerts the driver of possible lane or road deviations even when lane markings are interrupted, and helps assist steering to avoid them. In addition, while driving on highways and automobile-only roads with All Speed Active Cruise Control activated, it helps assist steering to keep the vehicle in the lane.



### All-Speed Active Cruise Control<sup>1</sup>

In addition to maintaining a constant speed, All-Speed Active Cruise Control uses the millimetre-wave radar and monocular camera sensors to detect a vehicle driving ahead and maintain an appropriate distance between vehicles.



### Road Sign Assist (Speed Signs Only)<sup>1</sup>

To help support safe driving, RSA uses the monocular camera sensor to detect key speed signs such as speed limit signs, and displays them on the multi-information display. In the event the driver exceeds the detected speed limit, RSA provides a visual notification.

<sup>1</sup>Driver assist feature. Only operates under certain conditions. Check your Owner's Manual for explanation of limitations. Please drive safely. Overseas model shown. Australian specifications and features may differ. See your Lexus dealer for details.

## — ADVANCED TECHNOLOGY

## LEXUS SAFETY SYSTEM +



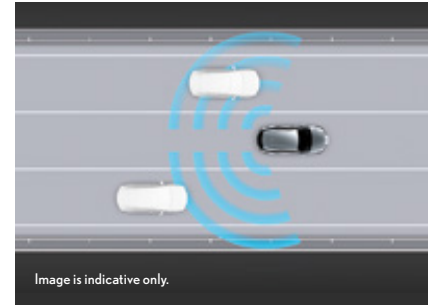
### AHS (Adaptive High-beam System)<sup>1,3</sup>

In the BladeScan AHS, LED light is projected onto a plate rotating at high speed called a 'blade mirror,' with the reflected light passing rapidly through a lens to illuminate the forward direction. The LEDs switch on and off with optimal timing to enable fine control of light distribution, enhancing the range of illumination while blocking a small area in front of the car. This enables the BladeScan system to provide a broad field of high-beam illumination with natural light distribution to enhance the visibility of road shoulders and other more distant areas, supporting early driver recognition of pedestrians and road signs without dazzling the drivers of oncoming or preceding vehicles.



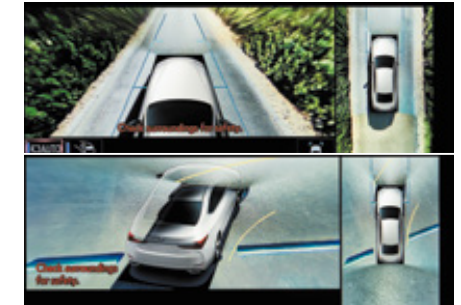
### PKSB (Parking Support Brake)<sup>1</sup>

PKSB detects stationary objects such as walls in the direction of travel, as well as vehicles and pedestrians approaching from behind while reversing, and alerts the driver on the display and with a buzzer. In addition, in the event that the system determines a collision is likely, it applies drive force and brake force control to help avoid minor collisions and mitigate damage.



### Blind Spot Monitor System<sup>1</sup>

When the quasi-millimetre-wave radars in the rear bumper detect vehicles in adjacent lanes that aren't visible in the door mirrors, the system activates an LED warning indicator in the relevant door mirror the moment a vehicle enters this blind spot.



### Panoramic View Monitor<sup>1,2</sup>

To help check areas surrounding the vehicle that are difficult to see from the driver's seat, the system shows a bird's-eye view of the vehicle in real time on the 12.3-inch or 8-inch EMV touch displays, using a composite image taken by cameras mounted on the front, sides, and rear of the vehicle.

<sup>1</sup>Driver assist feature. Only operates under certain conditions. Check your Owner's Manual for explanation of limitations. Please drive safely.

<sup>2</sup>Available on ES 300h F Sport onwards and ES 300h Luxury + EP and ES 300h Sports Luxury models only.

<sup>3</sup>Available on F Sport & Sports Luxury models only.

Overseas model shown. Australian specifications and features may differ. See your Lexus dealer for details.



## — ADVANCED TECHNOLOGY

LEXUS SAFETY SYSTEM + 



### SRS (Supplemental Restraint System) airbags

The ES features dual-stage SRS airbags (Front seats), SRS knee airbags (Front seats), SRS side airbags (Front and outboard rear seats) and SRS curtain shield airbags (Front and rear seats).



### Lexus Connected Services<sup>1</sup>

The Lexus ES includes Lexus Connected Services, a feature offering an advanced suite of three smart technologies designed for simplicity, safety and convenience. Firstly, (SOS) Emergency Call<sup>2</sup> is designed to instantly connect the driver to a trained agent who can direct emergency service providers to the vehicle's location if required. Secondly, Automatic Collision Notification,<sup>3</sup> where the vehicle's built-in sensors notify the Emergency Call Centre automatically in the event of the vehicle detecting a severe collision, even if the driver is unable to place the call themselves. And finally, Stolen Vehicle Tracking,<sup>4</sup> a feature making it possible to locate and potentially recover the vehicle if stolen, in coordination with the Emergency Call Centre and the police.

<sup>1</sup>Connected Services complimentary period ends 3 years from delivery date. Fees and charges may apply thereafter. Not available outside Australia or if services disabled or terminated. Dependent on 3G/4G enabled DCM, GPS signal strength, mobile network coverage and other factors outside Toyota's control which can limit ability or functionality of system. Check your Owner's Manual for explanation of limitations. Please drive safely.

<sup>2</sup>Driver assist feature only. Not a substitute for safe driving practices. Not available outside Australia or if service is disabled or terminated. Only operates if vehicle's SOS button is pressed. Dependent on 4G enabled DCM, GPS signal strength, mobile network coverage, operational related components and other factors outside Lexus' control which can limit the ability or functionality of the system. Check your Owner's Manual for explanation of limitations. Please drive safely.

<sup>3</sup>Driver assist feature only. Not a substitute for safe driving practices. Not available outside Australia or if service is disabled or terminated. Only activates if vehicle's DCM detects airbag deployment or an impact sensor notification. Dependent on 4G enabled DCM, GPS signal strength, mobile network coverage, operational related components and other factors outside Lexus' control which can limit the ability or functionality of the system. Check your Owner's Manual for explanation of limitations. Please drive safely.

<sup>4</sup>Not available outside Australia or if service is disabled or terminated. Dependent on sufficient battery power, 4G enabled DCM, GPS signal strength, mobile network coverage, operational related components & other factors outside Lexus' control which can limit the ability or functionality of the system. Guest required to obtain Police report. Vehicle location information, if available, only provided to Police. Vehicle recovery not guaranteed. For details, visit <https://www.lexus.com.au/connectivity/lexus-connected-services-faq>.

Overseas model shown. Australian specifications and features may differ. See your Lexus dealer for details

# LEXUS — F SPORT



F SPORT evolves the Lexus sport DNA that finds its ultimate expression in the LFA supercar, to enable more drivers to experience its exhilarating performance and unique personality. The F SPORT further enhances the driving excitement of the ES so that drivers can enjoy a sense of oneness with the car, born of its ability to respond immediately to their intentions in various situations.



## — F SPORT



The F SPORT is designed to extend the limits of the ES's smooth performance. The exterior features an exclusive mesh radiator grille, rear lower bumper garnish, and other design cues that highlight the F SPORT's fearless and aggressive personality. In the cabin, a selection of exclusive features heightens expectation of exhilarating performance. The specially-tuned suspension delivers sharp steering feel, flat cornering and a smooth ride, while additional refinements realise exceptional performance in various driving situations.

- |          |                                       |          |                     |
|----------|---------------------------------------|----------|---------------------|
| <b>A</b> | Front mesh grille                     | <b>D</b> | Alloy wheels        |
| <b>B</b> | Grille molding<br>(jet black plating) | <b>E</b> | Front ender emblems |
| <b>C</b> | Side garnish                          |          |                     |

## — F SPORT



**F** Boot garnish and rear combination lamps molding (jet black plating)

**G** Rear bumper



## — F SPORT



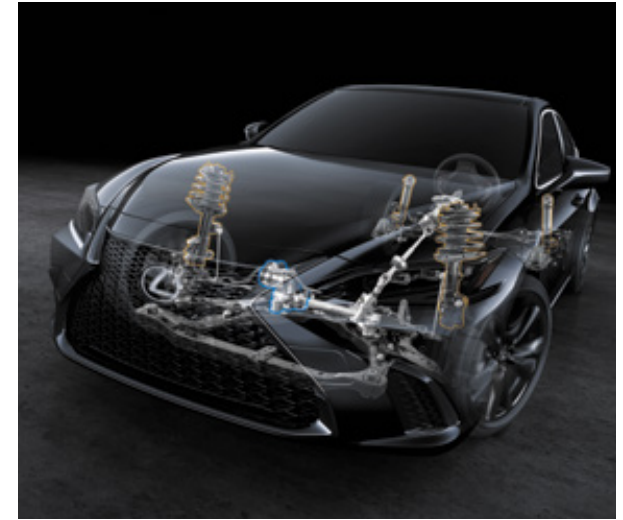
### Performance dampers

Performance dampers in the front and rear heighten the sense of oneness between car and driver. They quickly absorb body flex and minuscule vibrations while driving to sharpen handling characteristics, as well as contributing to the excellent ride comfort and quietness.



### AVS (Adaptive Variable Suspension system)<sup>1</sup>

AVS provide seamless, continuously variable control, electronically optimising the damping force of the shock absorbers in response to the vehicle's movement. It isolates shocks and provides a flat ride even on road surfaces with large undulations and rough patches, further enhancing the excellent steering response and stability while also realising pleasant ride comfort. During cornering, the system works with the specially-tuned suspension to maintain a natural stance, letting you enjoy aggressive driving. In addition, drive mode select offers the choice of Eco, Normal, Sport S/S+, and Custom Modes.



### ESE (Engine Sound Enhancement)

ESE enhances the engine sound to heighten the exhilaration of F SPORT performance when the powertrain is in Power mode and Sport S/Sport S+ or Custom Mode is selected in drive mode select.

<sup>1</sup>Available on ES 300h F Sport models only.

Overseas model shown. Australian specifications and features may differ. See your Lexus dealer for details.

## — F SPORT



H Meters and multi-information display

I Clock

J Steering wheel

K Aluminum pedals

L Shift lever knob

M Trim



## — F SPORT



### F SPORT multi-information display

The meter ring on the large TFT (Thin Film Transistor) colour multi-information display slides to the side at a touch of a switch on the steering wheel.



### F SPORT meters

Evolved from the LFA supercar, the advanced interface of the F SPORT's sliding meter ring uses motion graphics that combine beautiful design with excellent visibility to display a range of functions that instantly communicate important information according to its priority.



### F SPORT front seats

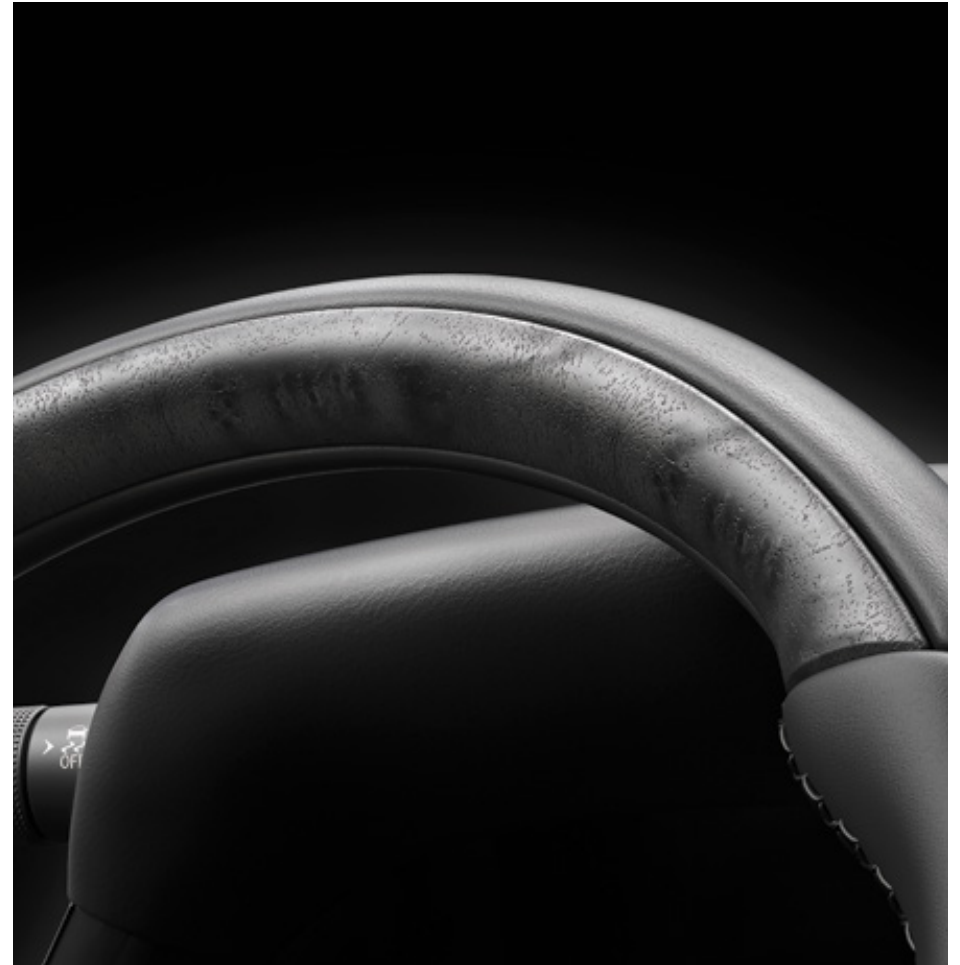
The exclusive sports seats evoke the sharp design of the LC's sports seats. An 'integrated foaming' structure contributes to the excellent fit and holding performance. Optimised for the F SPORT, these seats combine outstanding comfort with excellent support for the body during sports driving.

# LEXUS — TAKUMI



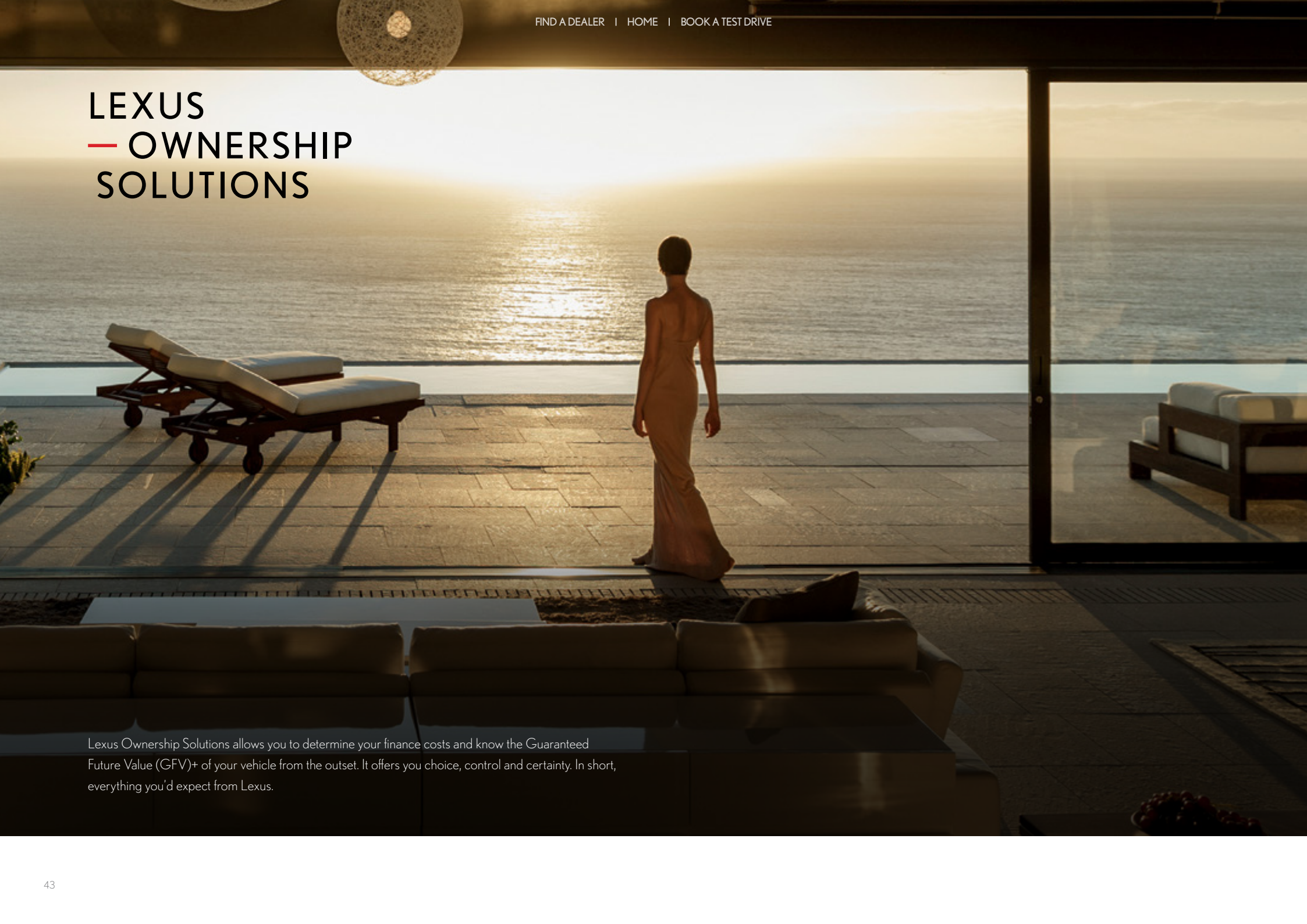


## — TAKUMI



Our Takumi craftspeople strive for perfection in every aspect of their work, actively seeking enhancements by applying constant care and dedication to their craftsmanship, blending their skills with the power of technology to better anticipate the future.

# LEXUS — OWNERSHIP SOLUTIONS



Lexus Ownership Solutions allows you to determine your finance costs and know the Guaranteed Future Value (GFV)+ of your vehicle from the outset. It offers you choice, control and certainty. In short, everything you'd expect from Lexus.



## — LEXUS OWNERSHIP SOLUTIONS

### How does Lexus Ownership Solutions work?

You choose the deposit that best fits your needs.

- You choose your term, ranging from 1 – 4 years.
- You decide on the estimated kilometres you think the vehicle will have travelled at the end of the term (the End Odometer). The End Odometer will also include any kilometres already on the vehicle.
- Lexus Financial Services (LFS) then determines the GFV+ of your vehicle and calculates your monthly repayments with a final payment equal to the GFV. The GFV is the minimum value of your Lexus at the end of your finance contract. So, if you choose to return your Lexus at the end of the term, LFS will pay you the GFV which will be put towards the remaining balance owing on your account (subject to fair wear and tear conditions and agreed kilometres being met).

### The end of the term? Simply replace, retain or return.

At the end of your term you can choose to:

- Replace or sell your Lexus using the trade-in value or sale price to pay the remaining balance of your account.
- Retain your Lexus and simply pay the remaining balance of your account (including final payment).
- Alternatively, return your Lexus and, subject to fair wear and tear conditions and the agreed kilometres being met, we'll put the GFV towards the remaining balance on your account.

### Choosing your deposit – what is best for you?

With the flexibility of Lexus Ownership Solutions, you can choose the deposit that best fits your current needs.

- If, for example, you have funds tied up in other investments, you can choose to finance your new Lexus with a zero deposit.<sup>††</sup>
- Alternatively, by using a larger deposit, you can lower your monthly repayments.
- Or, compared to other finance options over a similar term with no GFV or equivalent balloon final payment, Lexus Ownership Solutions can provide lower monthly repayments.<sup>††</sup>

### Want more certainty?

With Lexus Ownership Solutions, you've got the reassurance that at the end of the term (subject to fair wear and tear and agreed kilometres being met), you will know your GFV<sup>+</sup>, the minimum value of your Lexus from the outset, as determined by LFS.

### What happens in the case of the unexpected?

If your vehicle incurs damage and does not meet the Fair Wear and Tear guidelines, LFS will give you the opportunity to have your vehicle repaired. Otherwise, LFS can organise the repairs and deduct the cost from your GFV. This adjusted GFV will then be the price that LFS will offer you if you return the vehicle at the end of your term. Of course, if you retain the vehicle, the condition doesn't matter, however, if you replace it or sell it privately, the condition will obviously impact your sale price.

### So what does your accountant think?

Naturally, we think Lexus Ownership Solutions is an excellent, innovative way to put you in control of buying a new Lexus. That said, we suggest you seek independent advice to ensure Lexus Ownership Solutions is right for you.

### Wouldn't it be great if Lexus Ownership Solutions was just the beginning?

Lexus' innovations and commitment to customer service extend well beyond Lexus Ownership Solutions. Once you purchase a new Lexus, you'll become a member of the Lexus Encore Owner Benefits Program and enjoy a host of exclusive benefits.<sup>†</sup> For further details, simply visit your nearest Lexus dealer or see [lexus.com.au/owners/benefits](https://lexus.com.au/owners/benefits)

<sup>+</sup>The Guaranteed Future Value (GFV) is the minimum value of your new or approved demonstrator Lexus at the end of your finance contract, as determined by Lexus Financial Services (LFS). If you decide to return your car to Lexus at the end of your term, LFS will pay you the agreed GFV which will be put against your final payment, subject to fair wear and tear conditions and agreed kilometres being met. The information provided is general in nature. You should seek your own financial advice to determine whether Lexus Ownership Solutions is appropriate for your individual circumstances. Please speak with your Lexus Dealer for more information. Terms, conditions, fees and charges apply. Lexus Ownership Solutions GFV products are available to approved customers of Lexus Financial Services, a division of Toyota Finance Australia Limited ABN 48 002 435 181, AFSL and Australian Credit Licence 392536.

<sup>++</sup>Lower monthly repayments compared to a similar term with no Guaranteed Future Value (GFV) or equivalent balloon final payment. Total interest charges will be higher if a GFV or balloon final payment is selected.

<sup>†</sup>Encore Program is available to all Lexus Vehicle Owners to join. Memberships and benefits vary depending on eligibility and vehicle model owned. Memberships lasts for 36 months except for paid Encore Elevate which lasts 12 months from activation by the Dealership. Inclusions may change. Subject to availability. For full T&Cs, see your Lexus Dealer or [lexus.com.au/smallprint/encore-terms](https://lexus.com.au/smallprint/encore-terms).

<sup>††</sup>Approved applicants only. Terms and conditions apply. A deposit may be required for capacity reasons.

## — EXTERIOR COLOURS

The ES is available in a selection of captivating and stimulating exterior and interior colours. Its rich form shows a changing face to the world in different light conditions such as sunlight and streetlights at night, providing a dramatic view that changes with the location and time of day.



White Nova <083>\*  
(Available on F Sport models only)



Sonic Quartz <085>\*  
(Not available on F Sport models)



Sonic Iridium <1L2>\*



Sonic Chrome <1L1>\*



Titanium <1J7>\*



Graphite Black <223>



Vermillion <3R1>\*



Glacial Ecu <4X8>\*



Radiata Green <6X0>\*



Cobalt Mica <8X1>\*  
(Available on F Sport models only)



Deep Blue <8X5>\*  
(Not available on F Sport models)

\*Paint featured is an option available at additional cost.

Lexus Australia reserves the right to vary or discontinue the current interior and exterior colours, trims and colour/trim/model combinations.

Colours and trims displayed are a guide only and may vary from actual colours due to printing/display process.

See your Lexus dealer to confirm availability when ordering your vehicle.

Overseas model shown. Australian specifications and features may differ. See your Lexus dealer for details.



## — INTERIOR TRIMS

The journey begins with the finishing touches.



**NuLux™1 (Luxury)**



Interior Trim: Hazel



**NuLux™1 (Luxury)**



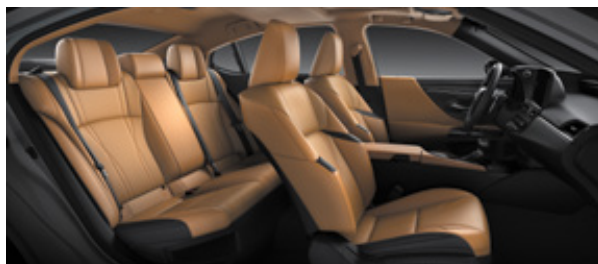
Interior Trim: Black



**Smooth leather (Luxury + Enhancement Pack)**  
**Semi-aniline leather (Sports Luxury)**



Interior Trim: Solis White



**Smooth leather (Luxury + Enhancement Pack)**  
**Semi-aniline leather (Sports Luxury)**



Interior Trim: Hazel



**Smooth leather (Luxury + Enhancement Pack)**  
**Semi-aniline leather (Sports Luxury)**



Interior Trim: Mauve



**Smooth leather (Luxury + Enhancement Pack)**  
**Semi-aniline leather (Sports Luxury)**



Interior Trim: Black

<sup>1</sup>Product and company names are trademarks of their respective owners.

Lexus Australia reserves the right to vary or discontinue the current interior and exterior colours, trims and colour/trim/model combinations. Colours and trims displayed are a guide only and may vary from actual colours due to printing/display process.

See your Lexus dealer to confirm availability when ordering your vehicle.

Overseas model shown. Australian specifications and features may differ. See your Lexus dealer for details..

## — INTERIOR TRIMS



**NuLux™1 (F Sport)**



Interior Trim: F Sport White



**NuLux™1 (F Sport)**



Interior Trim: F Sport Black



**NuLux™1 (F Sport)**



Interior Trim: Flare Red

<sup>1</sup>Product and company names are trademarks of their respective owners.

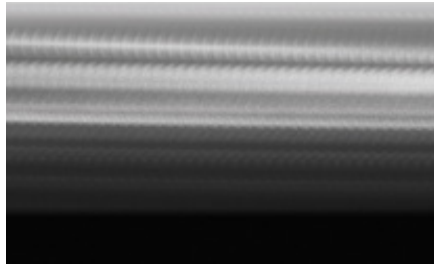
Lexus Australia reserves the right to vary or discontinue the current interior and exterior colours, trims and colour/trim/model combinations. Colours and trims displayed are a guide only and may vary from actual colours due to printing/display process.

See your Lexus dealer to confirm availability when ordering your vehicle.

Overseas model shown. Australian specifications and features may differ. See your Lexus dealer for details..



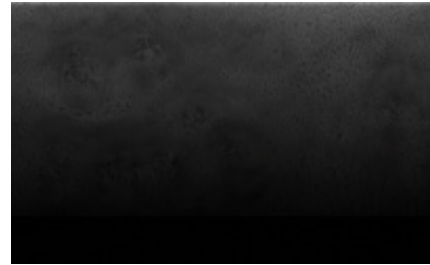
## — ORNAMENTATIONS



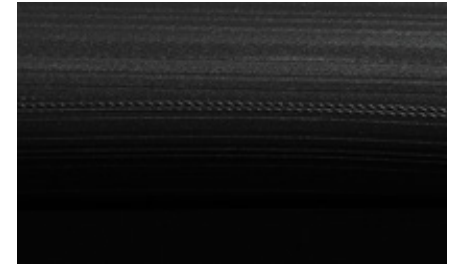
**Hadori Aluminium**  
(F Sport models only)



**Walnut Brown**  
(Sports Luxury models only)



**Sumi Black**



**3D Film**  
(Luxury models only)



**Bamboo**  
(Sports Luxury models only)

Lexus Australia reserves the right to vary or discontinue the current interior and exterior colours, trims and colour/trim/model combinations. Colours and trims displayed are a guide only and may vary from actual colours due to printing/display process. See your Lexus dealer to confirm availability when ordering your vehicle.  
Overseas model shown. Australian specifications and features may differ. See your Lexus dealer for details.

## — MAIN FEATURES

		Luxury	F-Sport	Sports Luxury
Exterior	19" F Sport Alloy Wheels		*	
	17" Alloy Wheels	*		
	18" Alloy Wheels	EP		
	18" Sports Luxury Alloy Wheels			*
	Bi LED Headlamps	*		*
	Cornering Lamps	*	*	*
	Daytime Running Lamps	*		*
	Power Folding and Aspherical Outer Mirrors	*		*
	Rear Spoiler	*		*
	Temporary Spare Wheel	*		*
	Shark Fin Antenna	*		*
	LED Turn Signals			*
	3 Beam LED Low/High Beam + Headlamp Cleaner		*	*
	F Sport Styling		*	
	F Sport Grille		*	
	LED Turn Signals		*	*
Interior	10-Way Power Adjust Front Seats (incl. 2-way power lumbar adjust for D&P)	*		
	14-way Power Adjust Driver Seat (incl. 4-way lumbar adjust + Variable Cushion length (D))	EP		
	14-way Driver and 12-way Passenger power Adjusted seats (incl. Lumbar support 4-way (D&P) + Variable Cushion length (D))			*
	7" Colour TFT	*		*
	Black Film Ornamentation	*	*	*
	Easy Access System (Steering Wheel Only)	*	*	*
	Heated Front Seats	*	*	*
	Leather Gear Knob and Steering Wheel with paddle	*	*	*
	NuLux <sup>TM2</sup> Interior Trim	*	*	*
	Power Adjust Steering Column	*	*	*
	Driver Memory	EP	*	
	Semi-Aniline Leather Accented Seats			*
	Leather Accented Seats	EP	*	
	Driver and Passenger Memory Seat			*
	Unique Ornamentation (Bamboo Optional)			*
	Woodgrain Look Console Box			*
	F Sport Seats		*	
	F Sport Headrest (4 Way Adjustable)		*	
	Driver Memory Seat		*	
	F Sport NuLux <sup>TM2</sup>		*	
	8" Colour TFT		*	
	F Sport Interior Styling		*	
	Hadori Aluminium Ornamentation		*	

		Luxury	F-Sport	Sports Luxury
Powertrain	2.5L 4th Generation Lexus Hybrid Drive System	*	*	*
	3 Drive Modes (Eco, Normal and Sport)	*	*	*
	Active Noise Control		*	*
	Front and Rear Performance Rods		*	
	5 Drive Modes (Eco, Normal, Sport S, Sport S +, Custom)		*	
	Adaptive Variable Suspension (AVS)		*	
	F Sport Suspension		*	
	Front and Rear Performance Rods		*	
Comfort and Convenience	Heated Steering Wheel		EP	*
	Leather, Wood and Heated Steering Wheel			*
	Rear Heated Seats			*
	Tri-Zone Temperature Control with Humidity Sensor			*
	Rear Seat Control Panel			*
	Automatic Rain-Sensing Wipers	*	*	*
	Dual-Zone A/C and Humidity Sensor	*	*	*
	EC Mirror	*	*	*
	Electronic Park Brake	*	*	*
	Head Up Display	*	*	*
	Moonroof (Tilt and Slide)	*	*	*
	Privacy Back and Rear Side Glass	*	*	*
	Smart Key Card	*	*	*
	Wireless Charger <sup>1</sup>	*	*	*
	Nanoex <sup>TM2</sup>	*	*	*
	Easy Access System (Steering Wheel + Seat Slide)	EP	*	*
	Front Ventilated Seats	EP	*	*
	Power Rear Window Sunshade	EP		*
	Rear Side Door Sunshade	EP	*	*
	Power Back Door and Kick Sensor	EP	*	*
	Mark Levinson <sup>®2</sup> Audio and 17 speakers		EP	



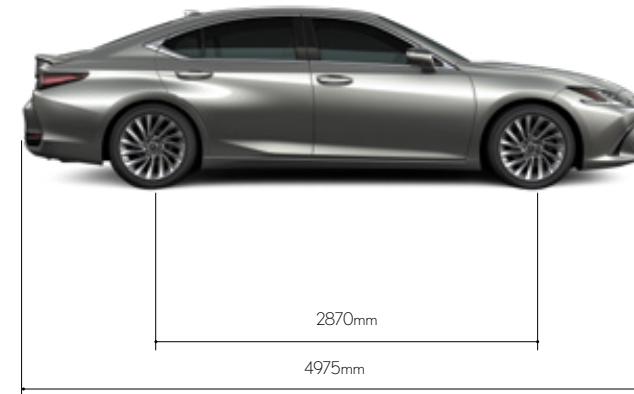
## — MAIN FEATURES CONTINUED

		Luxury	F-Sport	Sports Luxury
Multimedia and Order	12.3" Touch Screen and 10 speakers	•	•	•
	Mark Levinson <sup>®4</sup> Premium Audio + 17 Speakers		EP	•
	21MM with Wireless Android Auto <sup>™</sup> and Wireless Apple CarPlay <sup>®1</sup>	•	•	•
	Pop up hood	•	•	•
	Navigation DAB	•	•	•
	Rear Seat Reminder	•	•	•
	Lexus Connected Services <sup>3</sup>	•	•	•
	2x USB Type-C ports console box	•	•	•
	Accessory socket (1x 12V console box and 1x rear)	•	•	•
Safety <sup>2</sup>	SRS Airbags (10 - D+P, D+P Knee, FR+RR Side, CSA)	•	•	•
	Pre Collision System +2	•	•	•
	AEB (Pre collision brake / brake assist) with Pedestrian & Cyclist detection	•	•	•
	Lane Trace Assist (LTA & LDA)	•	•	•
	Automatic High Beam (AHB)	•	•	•
	Intersection Assist and Emergency Steering Assist	•	•	•
	Parking Support Brake (PKSB Obstacle & Vehicle detection, 4 FR & 4 RR parking sonar)	•	•	•
	BSM	•	•	•
	Dynamic Radar Cruise Control	•	•	•
	Tyre Pressure Warning System	•	•	•
	Hill Start Assist Control (HAC)	•	•	•
	Road Sign Assist	•	•	•
	Pop Up hood	•	•	•
	Rear Seat Reminder	•	•	•
	Auto Fold Mirror with Reverse Linked Auto Dipping	EP	•	•
	Panoramic View Monitor	EP	•	•
	PKSB (+ Pedestrian Detection)	EP	•	•
	Adaptive High Beam System (AHS) and BladeScan		•	•

<sup>1</sup>Requires compatible device, USB connection or Bluetooth<sup>®</sup> connection for vehicles fitted with wireless CarPlay<sup>®</sup> and wireless Android Auto<sup>™</sup> is a trademark of Google LLC. <sup>2</sup>Driver assist feature. Only operates under certain conditions. Check your Owner's Manual for explanation of limitations. Please drive safely. <sup>3</sup>Complimentary period ends 3 years from delivery date. Fees may apply thereafter. See [lexus.com.au/connectivity](https://lexus.com.au/connectivity). Not available outside Australia, if services disabled or terminated, or after 2033/Telstra 4G sunset (whichever comes first). Dependent on 3G/4G enabled DCM, GPS signal strength, mobile network coverage and other factors outside Lexus's control which can limit ability or functionality of system. Check your Owner's Manual for explanation of limitations. Please drive safely. <sup>4</sup>Product and company names are trademarks of their respective owners.

## SPECIFICATIONS

		ES 300h
Dimensions and Weight (approximate) <sup>1</sup>	Overall Length (mm)	4975
	Overall Width (mm)	1865
	Overall Height (mm)	1445
	Wheelbase (mm)	2870
	Maximum Kerb Weight (kg)	1740
	Gross Vehicle Mass (GVM) (kg)	2150
	Seating Capacity	5
Chassis	Suspension	Front: MacPherson <sup>4</sup> Strut Type Rear: Trailing Wishbone
	Steering System	EPS (Electric Power Steering)
	Brakes (mm)	Front: 305/28 Ventilated Discs Rear: 281/12 Solid Discs
	Minimum Turning Radius (Tyres)	5.8m (Luxury) 5.9m (Luxury + EP, F Sport and Sports Luxury)
	Fuel Tank Capacity (L)	50
	Tyre Sizes	215/55R17 94V (Luxury) 235/40R19 96Y (F Sport)
		235/45R18 94Y (Luxury + EP; Sports Luxury)
Engine	Type	Petrol
	Description	2.5L 4-cylinder, Inline type, 16-Valve, DOHC, VVT-iE (intake), VVT-i
	Maximum Power	131kW @ 5700rpm
	Maximum Torque	221Nm @ 3600-5200rpm
	Fuel Economy (Combined, L/100km) <sup>2</sup>	4.8
	Carbon Dioxide (Combined, g/km) <sup>3</sup>	109
Drivetrain	Driven Wheels	FWD
	Transmission	Electronic continuously variable transmission
Motor	Type	Permanent magnet motor
	Max. Output (kW)	88 (120)
	Max. Torque (Nm)	202 (20.6)
	Total System Output (kW)	160 (218)
Hybrid Battery	Type	Sealed Ni-MH (Nickel-Metal Hydride)
	Nominal Voltage	244.8
	Total Battery Cells	204



Weights/mass/volumes/dimensions are approximate and subject to individual vehicle variances, and should be confirmed before fitting any accessories, towing or otherwise relying on this value.

<sup>1</sup>Weights/mass/volumes/dimensions are approximate and subject to individual vehicle variances, and should be confirmed before fitting any accessories, towing, or otherwise relying on this value. <sup>2</sup>Results achieved for ES 300h in ADR81/02 combined drive cycle fuel consumption testing. Urban cycle results achieved 5.1L/100km & extra urban cycle achieved 4.5L/100km for models with 234/45R18 tyres. Urban cycle results achieved 5.2L/100km & extra urban cycle achieved 4.7L/100km for models with 235/40R19 tyres. Results produced in laboratory test conditions, using sample vehicles without fitment of accessories/customisation, & do not reflect real world driving. Figures should only be used for comparative purposes. <sup>3</sup>Results achieved for ES 300h in ADR81/02 combined drive cycle CO<sub>2</sub> testing. Urban cycle results achieved 115g/km & extra urban cycle achieved 103g/km for models with 234/45R18 tyres. Urban cycle results achieved 118g/km & extra urban cycle achieved 107g/km for models with 235/40R19 tyres. Results produced in laboratory test conditions, using sample vehicles without fitment of accessories/customisation, & do not reflect real world driving. Figures should only be used for comparative purposes. <sup>4</sup>Product & company names are trademarks of their respective owners. Overseas model shown. Australian specifications and features may differ. See your Lexus dealer for details. Lexus Australia uses its best endeavours to ensure material is accurate at the time of publishing. All information must be confirmed with your Lexus dealer at the time of ordering, as specifications, applicability and availability may change over time. Colours depicted are a guide only and may vary from actual colours due to the printing/display process. Lexus Australia reserves the right to change and/or discontinue, without notice, models, prices, colours, materials, equipment, specifications. To the extent permitted by law, Lexus Australia will not be liable for any damage or loss incurred from relying on the information and images contained in this material. Distributed nationally by Lexus Australia, a division of Toyota Motor Corporation Australia Limited ABN 64 009 686 097. Proof: L2024-000498. Published: January 2025.