

LBX

MORIZO RR



Overseas model shown. Final range and specifications may differ from those depicted.



LBX MORIZO RR	P3
EXTERIOR DESIGN	P4
INTERIOR DESIGN	P5
LEXUS PERFORMANCE	P6
LEXUS SAFETY	P7
LEXUS OWNERSHIP SOLUTIONS	P8
ENCORE	P10
COLOURS AND TRIMS	P11
MAIN FEATURES	P12
SPECIFICATIONS	P13

CREATED BY — THE MASTER

The limited LBX Morizo RR represents thousands of hours of painstaking thinking, testing and finely tuned innovation. Brought to life via the vision of Master Driver Akio Toyoda, known by his social handle, 'Morizo', it signifies a pinnacle in design, power and technology across our LBX lineup. The 1.6L inline 3-cylinder, intercooled turbo petrol engine and direct shift 8-speed automatic transmission (with paddle shifters), is nothing short of exhilarating to drive. As a high performing compact SUV, it expertly handles every journey with some of the greatest levels of Lexus comfort.



— EXTERIOR DESIGN



When sized up, the overall appearance is compact and casual yet sleek, dispelling the myth that 'big equals better.' Smooth aerodynamic lines blend with flared arches. The road presence seen from the front and back is strong and striking. Accentuated by Lexus' bold front sports bumper and grille, designed to maximise cooling performance.

The exclusive 19-inch alloy wheels, inset with red brake calipers, are the tallest in the LBX range, while the vehicle itself sits on sports suspension 25mm lower than others within the LBX range. At the rear, 'Morizo RR' badging hints at the performance inside, combined with crisp Lexus lettering and a linear tail lamp.

— INTERIOR DESIGN



When you enter the cabin, there is an immediate sense of clear space and brightness. Dashboard instrumentation is horizontally placed with main displays tilted – providing for driver views that are open and uninterrupted. Seating is low and built for comfort, with cushioning that stabilises posture. The lighting inside can also be preset to suit the mood or moment.

Passengers and driver will feel at ease thanks to Lexus' climate concierge feature, which includes front seat and steering wheel heating. Everything inside has been created for smooth, easy driving, even in agile and challenging conditions. The connection you'll feel while driving is based on 'Tazuna'. A concept that promotes 'oneness' by building a space around the driver – and based on the link between a horse and its rider.

— ENGINE. POWER. PERFORMANCE.



Equipped with a 1.6L inline 3-cylinder intercooled turbo petrol engine, up to 206kW of power can be delivered, including 390Nm torque and 3,250 - 4,600 rpm in rapid mid-range thrust. Acceleration is swift, at 0-100 km/h in 5.2 seconds. Drivers also benefit from close 8-gear ratios and a paddled manual mode can be selected.



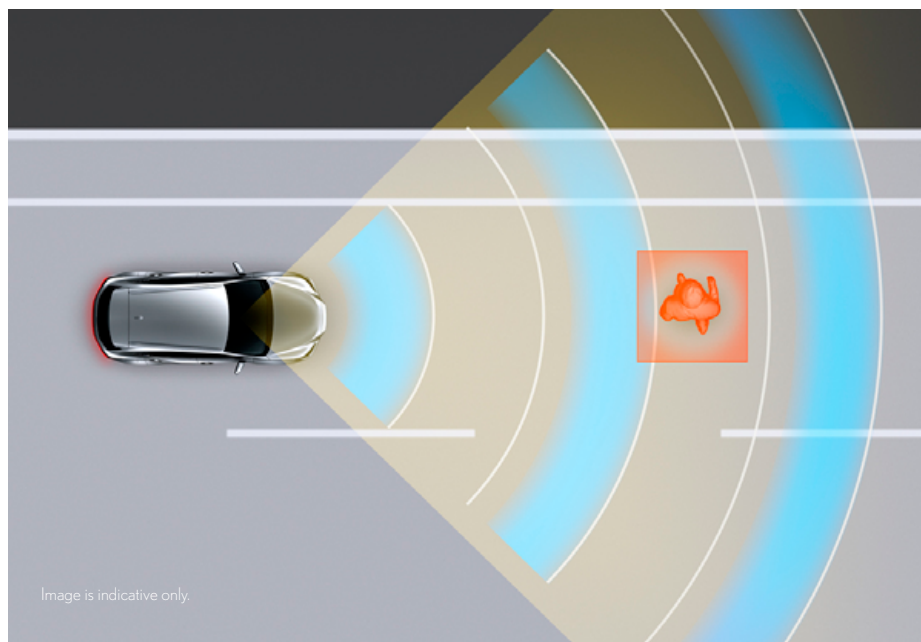
For added stability and confidence across a range of conditions, Torsen^{®1} limited slip differential and electronically controlled AWD comes standard. A dual tip exhaust system featuring a secondary intake has been tuned for both sport, and slow drives, with high quietness at low speed and stronger, satisfying notes during acceleration.

¹Torsen[®] is a registered trademark of JTEKT Corporation.

Overseas model shown. Final range and specifications may differ from those depicted.

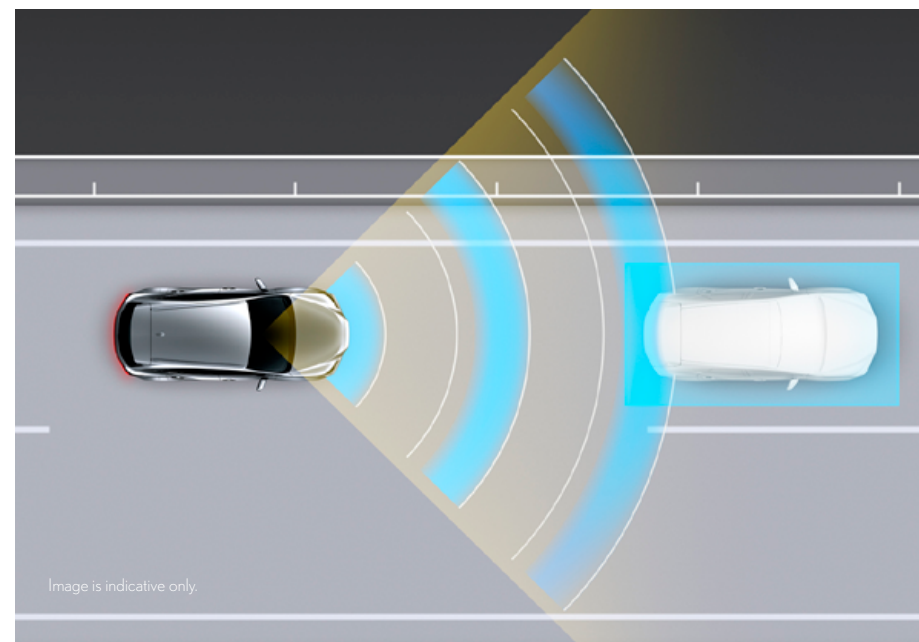
— LEXUS SAFETY

The latest iteration of Lexus Safety System + (LSS+) further evolves the various preventative safety and collision safety features that are now capable of handling complex scenarios.



Pre-Collision System¹

When the millimetre-wave radar and monocular camera sensors detect a vehicle, pedestrian, bicyclist (daylight only) or motorcycle ahead and determine that a collision is likely, it alerts the driver with a buzzer and on the display. If the driver activates the brakes, then pre-collision brake assist supplements the force being applied to the pedal. If the driver cannot depress the brake pedal, the system automatically helps by activating pre-collision braking to help avoid a collision or mitigate the impact force. If the system determines there is a high possibility of a frontal collision with an oncoming vehicle, it is designed to alert the driver and activate the brakes to help mitigate injury to people and damage to the vehicle.

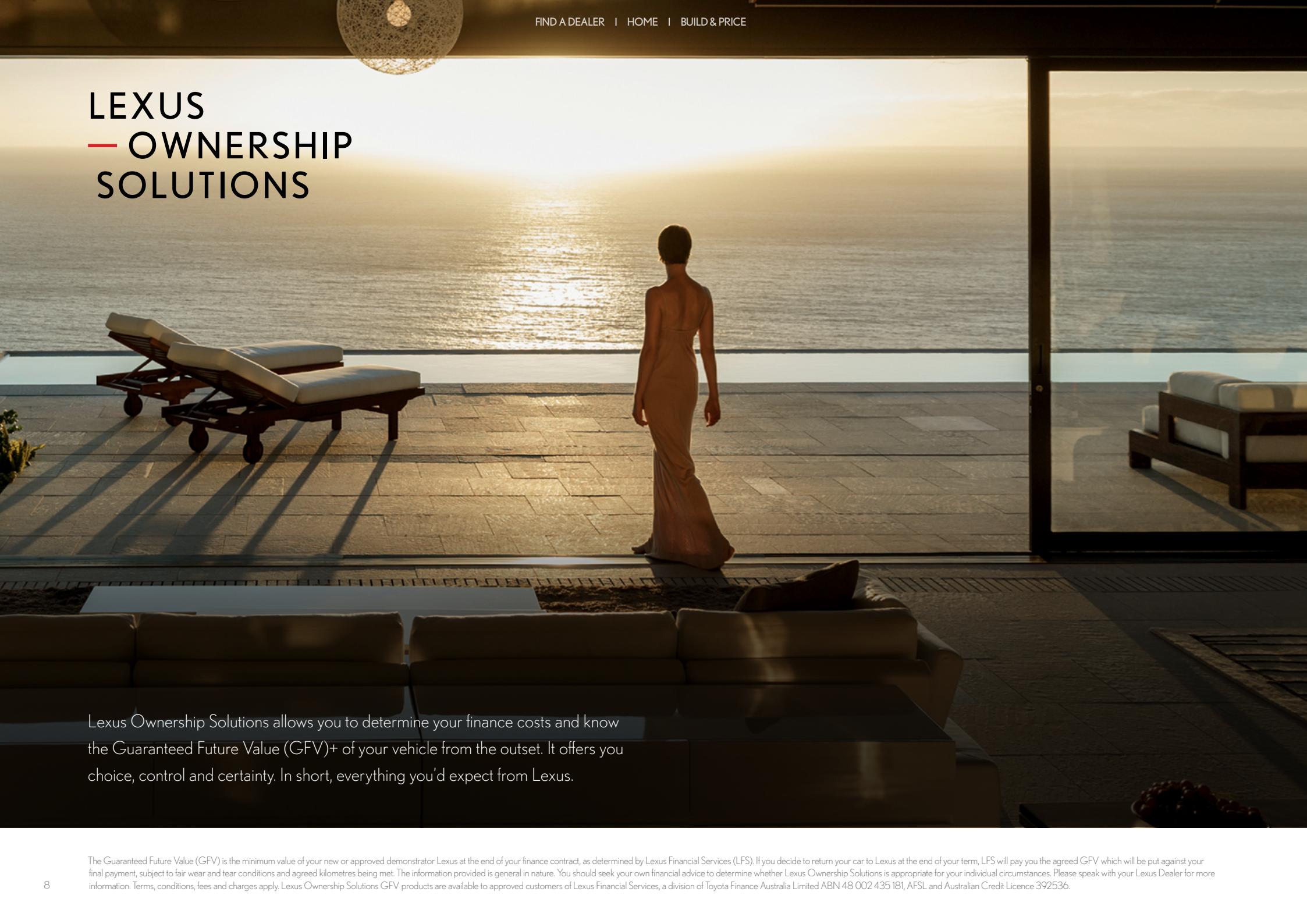


Dynamic Radar Cruise Control (With full speed range)

In addition to maintaining a constant speed, Dynamic Radar Cruise Control uses the millimetre-wave radar and monocular camera sensors to detect a vehicle driving in front and maintains an appropriate distance between the vehicles. When the driver operates the turn signal lamp at approximately 80km/h or over, preliminary deceleration is applied when following a preceding vehicle that is travelling slower than the preset vehicle speed. Alternatively, preliminary deceleration is designed to be applied when changing lanes into a lane where there is a preceding vehicle that is travelling slower than the preset vehicle speed, helping smooth overtaking and lane change. Furthermore, when approaching and driving through a curve, a Curve Speed Reduction Function is designed to decelerate the vehicle, reducing the need to cancel Dynamic Radar Cruise Control operation, enhancing driver convenience.

¹Driver assist feature. Only operates under certain conditions. Check your Owner's Manual for explanation of limitations. Please drive safely.
Overseas model shown. Final range and specifications may differ from those depicted.

LEXUS — OWNERSHIP SOLUTIONS



Lexus Ownership Solutions allows you to determine your finance costs and know the Guaranteed Future Value (GFV)+ of your vehicle from the outset. It offers you choice, control and certainty. In short, everything you'd expect from Lexus.

The Guaranteed Future Value (GFV) is the minimum value of your new or approved demonstrator Lexus at the end of your finance contract, as determined by Lexus Financial Services (LFS). If you decide to return your car to Lexus at the end of your term, LFS will pay you the agreed GFV which will be put against your final payment, subject to fair wear and tear conditions and agreed kilometres being met. The information provided is general in nature. You should seek your own financial advice to determine whether Lexus Ownership Solutions is appropriate for your individual circumstances. Please speak with your Lexus Dealer for more information. Terms, conditions, fees and charges apply. Lexus Ownership Solutions GFV products are available to approved customers of Lexus Financial Services, a division of Toyota Finance Australia Limited ABN 48 002 435 181, AFSL and Australian Credit Licence 392536.

— LEXUS OWNERSHIP SOLUTIONS

How does Lexus Ownership Solutions work?

You choose the deposit that best fits your needs.

- You choose your term, ranging from 1 – 4 years.
- You decide on the estimated kilometres you think the vehicle will have travelled at the end of the term (the End Odometer). The End Odometer will also include any kilometres already on the vehicle.
- Lexus Financial Services (LFS) then determines the GFV⁺ of your vehicle and calculates your monthly repayments with a final payment equal to the GFV. The GFV is the minimum value of your Lexus at the end of your finance contract. So, if you choose to return your Lexus at the end of the term, LFS will pay you the GFV which will be put towards the remaining balance owing on your account (subject to fair wear and tear conditions and agreed kilometres being met).

The end of the term? Simply replace, retain or return.

At the end of your term you can choose to:

- Replace or sell your Lexus using the trade-in value or sale price to pay the remaining balance of your account.
- Retain your Lexus and simply pay the remaining balance of your account (including final payment).
- Alternatively, return your Lexus and, subject to fair wear and tear conditions and the agreed kilometres being met, we'll put the GFV towards the remaining balance on your account.

Choosing your deposit – what is best for you?

With the flexibility of Lexus Ownership Solutions, you can choose the deposit that best fits your current needs.

- If, for example, you have funds tied up in other investments, you can choose to finance your new Lexus with a zero deposit.^{††}
- Alternatively, by using a larger deposit, you can lower your monthly repayments.
- Or, compared to other finance options over a similar term with no GFV or equivalent balloon final payment, Lexus Ownership Solutions can provide lower monthly repayments.^{††}

Want more certainty?

With Lexus Ownership Solutions, you've got the reassurance that at the end of the term (subject to fair wear and tear and agreed kilometres being met), you will know your GFV,⁺ the minimum value of your Lexus from the outset, as determined by LFS.

What happens in the case of the unexpected?

If your vehicle incurs damage and does not meet the Fair Wear and Tear guidelines, LFS will give you the opportunity to have your vehicle repaired. Otherwise, LFS can organise the repairs and deduct the cost from your GFV. This adjusted GFV will then be the price that LFS will offer you if you return the vehicle at the end of your term. Of course, if you retain the vehicle, the condition doesn't matter, however, if you replace it or sell it privately, the condition will obviously impact your sale price.

So what does your accountant think?

Naturally, we think Lexus Ownership Solutions is an excellent, innovative way to put you in control of buying a new Lexus. That said, we suggest you seek independent advice to ensure Lexus Ownership Solutions is right for you.

Wouldn't it be great if Lexus Ownership Solutions was just the beginning?

Lexus' innovations and commitment to customer service extend well beyond Lexus Ownership Solutions. Once you purchase a new Lexus, you'll become a member of the Lexus Encore Owner Benefits Program and enjoy a host of exclusive benefits.[†] For further details, simply visit your nearest Lexus dealer or see lexus.com.au/owners/benefits

⁺The Guaranteed Future Value (GFV) is the minimum value of your new or approved demonstrator Lexus at the end of your finance contract, as determined by Lexus Financial Services (LFS). If you decide to return your car to Lexus at the end of your term, LFS will pay you the agreed GFV which will be put against your final payment, subject to fair wear and tear conditions and agreed kilometres being met. The information provided is general in nature. You should seek your own financial advice to determine whether Lexus Ownership Solutions is appropriate for your individual circumstances. Please speak with your Lexus Dealer for more information. Terms, conditions, fees and charges apply. Lexus Ownership Solutions GFV products are available to approved customers of Lexus Financial Services, a division of Toyota Finance Australia Limited ABN 48 002 435 181, AFSL and Australian Credit Licence 392536.

^{††}Lower monthly repayments compared to a similar term with no Guaranteed Future Value (GFV) or equivalent balloon final payment. Total interest charges will be higher if a GFV or balloon final payment is selected.

[†]Encore Program is available to all Lexus Vehicle Owners to join. Memberships and benefits vary depending on eligibility and vehicle model owned. Memberships last for 36 months except for paid Encore Elevate which lasts 12 months from activation by the Dealership. Inclusions may change. Subject to availability. For full T&Cs, see your Lexus Dealer or lexus.com.au/encore.

^{††}Approved applicants only. Terms and conditions apply. A deposit may be required for capacity reasons.

— LEXUS ENCORE



Where Life Meets Amazing

Lexus allows you to experience amazing, but it doesn't end when you get out of your car. Because every Lexus driver gains membership to Encore:² an owner benefits program that brings amazing to every area of your life. Find out more details about Lexus Encore at lexus.com.au/owners/benefits

The LBX Morizo RR is applicable to these Encore memberships:

ENCORE

The original membership that includes DriveCare³ roadside assistance, Service Loan Car, Exclusive Events and Offers, and the option to purchase Airport Lounge passes.

ENCORE ELEVATE

This 1-year membership can be purchased by any Lexus owner. It builds on Encore with Lexus On Demand,⁴ Valet Parking and Airport Lounge passes.

	ENCORE	ENCORE ELEVATE	ENCORE PLATINUM	ENCORE PLATINUM ELECTRIFIED
	COMPLIMENTARY	PAID \$1,899	COMPLIMENTARY	COMPLIMENTARY
Models	LBX UX NX RX ES	Any Lexus model of any age ¹	LC LS LX LM	UX 300e RZ
Duration	3 years	1 year	3 years	3 years
Exclusive Offers	✓	✓	✓	✓
Exclusive Events	✓	✓	✓	✓
Ampol Fuel Offer	✓	✓	✓	
Service Loan Car	✓		✓	✓
DriveCare	✓		✓ 10 years DriveCare for LS	✓ 5 years DriveCare
On Demand		✓ Up to 5 days x 2	✓ Up to 8 days x 4	✓ Up to 8 days x 4
Valet Parking		✓ x 4	✓ x 8	✓ x 8
Airport Lounge	✓ Pay per use	✓ x 2	✓ x 4	✓ x 4
Charging Cables				✓
Home Charger and Standard Installation				✓
Complimentary Access to Chargefox Network				✓

¹Vehicles that have a current Encore Platinum/Encore Platinum Electrified Membership are not eligible for Encore Elevate. ²Encore Program is available to all Lexus Vehicle Owners to join. Memberships and benefits vary depending on eligibility and vehicle model owned. Memberships last for 36 months except for paid Encore Elevate which lasts 12 months from activation by the Dealership. Inclusions may change. Subject to availability. For full T&Cs, see your Lexus Dealer or lexus.com.au/smallprint/encore-terms. ³DriveCare as part of Lexus Encore Member Benefits applies for the term of membership to Lexus Encore Program, with exceptions applying to certain vehicles, through complimentary DriveCare superseding the term of the Encore Membership. Coverage and service inclusions vary dependent on the type of vehicle and vehicle location. For full T&Cs see your Lexus Dealer or lexus.com.au/smallprint/encore-terms. ⁴Lexus On Demand as part of Encore Member Benefits applies for a 1 year period with a varying number of redemptions depending on the type of Encore Membership. Vehicles may vary dependent on location and availability. For full T&C's, details and eligibility requirements see your Lexus Dealer or lexus.com.au/Encore.

— EXTERIOR AND INTERIOR COLOURS

The LBX Morizo RR is available in 4 distinctive two-tone exterior colour options (full body graphite black also available). Each two-tone colour utilises a hue inspired by the world around it. Reflecting what's outside, from bold sunlight and skies in the landscape, to bright streetlights and cities at night.



Graphite Black <223>



Sonic Chrome Two-Tone <2YH>



Rich Ruby Two-Tone <2TB>



White Nova Two-Tone <2ZT>

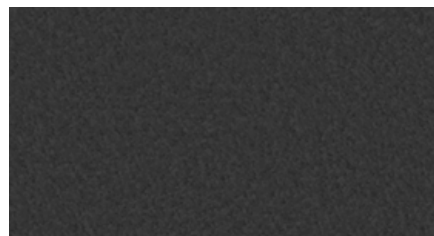


Cobalt Mica Two-Tone <2ZV>

Interior trims are available in black, with suede ornamentation.



Interior Trim: Black



Ornamentation: Suede Cloth

Lexus Australia reserves the right to vary or discontinue the current interior and exterior colours, trims and colour/trim/model combinations. Colours and trims displayed are a guide only and may vary from actual colours due to printing/display process. See your Lexus dealer to confirm availability when ordering your vehicle. Pre-production overseas model shown. Australian specifications and features may differ or be available on certain grades only. See your Lexus dealer for details.

— MAIN FEATURES

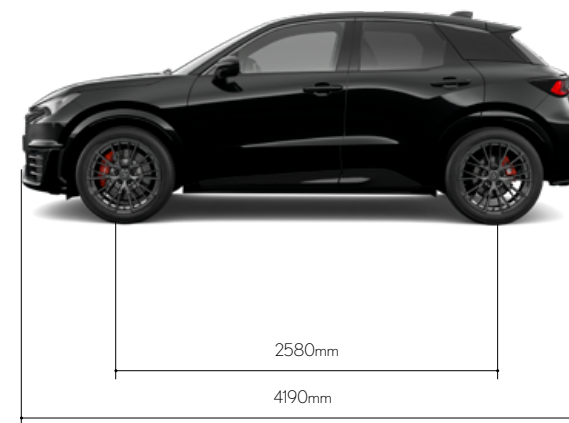
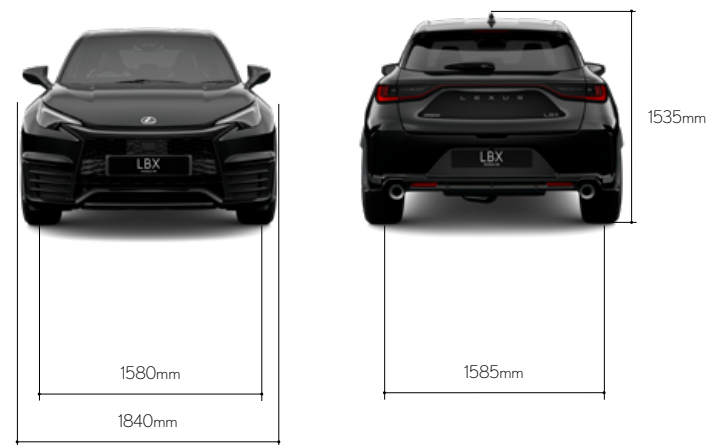
		LBX Morizo RR
Power Train	1.6L Turbocharged Inline 3-cylinder Engine with Intercooler (206kW/390Nm)	•
	Direct Shift-8-speed Automatic Transmission	•
	50L Fuel Tank	•
	EURO6C with OBD and Gasoline Particulate Filter (GPF)	•
	Drive Mode - Normal/Sport	•
	Electronically Controlled Full-Time AWD	•
Exterior	19" Alloy Wheels - 235/45R19 (Aluminium, Forged)	•
	Red Brake Calipers Front and Rear	•
	Single projector LED headlamps with Dynamic Auto-Levelling and Adaptive High-Beam System	•
	LED Daytime Running Lights (DRLs), Side Mirror Indicators and Rear Lights	•
	Exclusive Front and Rear Bumper Design	•
	Dual Exhaust Tail Pipes	•
	Front and Rear Air Spats	•
	Rear Spoiler	•
	Morizo RR Rear Badge	•
	Shark Fin Antenna	•
	Acoustic Front Side Glass and Rear Privacy Glass (Rear and Rear Side Windows)	•
	Anti-Chipping Tape (Rear Door)	•
	Auto-Dimming (Driver's Side) Side Mirrors with Auto Power-Folding	•
Interior	Premium Sport Front Seats	•
	Premium Sport Shift Knob	•
	Shift-By-Wire Gear Lever with Park button	•
	Electric Park Brake (EPB) with Brake Hold	•
	Suede Cloth Instrument Panel Finish and Front and Rear Console boxes	•
	Suede Cloth Door Trim and Door Ornamentation	•
	Front and Rear LED Interior Lighting including Door Trim and Console, Footwell, Dome Lamps, Luggage Compartment, Glovebox Lamp	•
	Multi-Colour Illumination	•
	Aluminium Pedals	•
	Sun Visors with Mirror	•
	Front and Rear Assist Grips	•
Multimedia	Metal Speaker Grille	•
	Lexus Connected Services (DCM) ¹	•
	21MM 9.8" Multimedia Display with Navi and DAB	•
	13-Speaker Mark Levinson ^{TM2} Premium Audio with Subwoofer	•
	Wireless Apple CarPlay [®] and Wireless Android Auto ^{TM3}	•
	5x USB-C Ports (3x Front, including one for communications, 2x Rear)	•
	Qi Wireless Phone Charger ⁴	•
	12V DC Front and Boot Sockets	•

		LBX Morizo RR
Comfort and Convenience	Dual-Zone Climate Control with Control Panel Integrated in MM Screen with NanoeX ^{TM12}	•
	Premium Sport Steering Wheel with Red Stitch, Paddle Shifters, Heater	•
	Touch-Sensitive Steering Wheel Controls	•
	Manual Tilt and Telescopic Steering Column	•
	4-Way Front Headrest Adjustment	•
	Heated Seats: Driver and Front Passenger	•
	8-Way Driver Seat Power Adjustment	•
	2-Way Driver Seat Power Lumbar Adjustment	•
	Smart Start and Smart Entry system	•
	3 ISOFIX Anchor Points	•
	Electric Power Steering (EPS)	•
	Torsen ^{®6} Limited Slip Differential	•
	60:40 Folding Rear Seats	•
	Remote Air Conditioning (DCM) ¹	•
	Power Back Door (PBD)	•
	MacPherson Strut Front and Double Wishbone Rear Suspension	•
	Front and Rear Stabilizer Bar	•
	Automatic Rain-Sensing Wipers	•
	Auto-Dimming Interior Rear View Mirror	•
	Active Noise Control (ANC)	•
	Active Sound Control	•
	Head-Up Display (HUD)	•
	2x Front Cup Holders (1x Console Box; 1x Centre Console)	•
	Seat Back Pockets (Driver and Passenger)	•
Safety ⁵	Lexus Safety Sense + (LSS +3)	•
	Pre-Collision System (PCS), Intersection Collision Avoidance Support, Emergency Steering Assist (ESA), and Acceleration Suppression at Low Speed	•
	Dynamic Radar Cruise Control (DRCC)	•
	Lane Trace Assist (LTA)	•
	Emergency Driver Stop System (EDSS)	•
	Adaptive High-Beam System (AHS)	•
	Road Sign Assist (RSA)	•
	E-Latch System with Safe Exit Assist (SEA)	•
	Anti-Theft System (Immobiliser, Alarm, Siren, Intrusion)	•
	Blind Spot Monitoring (BSM) and Rear Cross Traffic Alert (RCTA)	•
	Parking Sensors with Front and Rear Parking Support Brake (PKSB)	•
	Vehicle Stability Control (VSC) with Traction Control (TRC)	•
	Hill Start Assist (HSA)	•
	Reversing Camera with Guidelines and Rear Camera Washer	•
	Anti-lock Brake System (ABS)	•
	Electronic Brake force Distribution (EBD)	•
	Brake Assist (BA)	•
	Panoramic View Monitor (PVM)	•
	7x SRS Airbags - Driver and Passenger Front, Front Side Airbags, Driver knee, Left and Right Curtain Shield Airbag	•
	Tyre Repair Kit	•
	Tyre Pressure Warning System (TPWS)	•

¹Complimentary period ends 3 years from delivery date. Fees may apply thereafter. See lexus.com.au/connectivity. Not available outside Australia, if services disabled or terminated or after 2033/Telstra 4G sunset (whichever comes first). Dependent on 3G/4G enabled DCM, GPS signal strength, mobile network coverage and other factors outside Lexus' control which can limit ability or functionality of system. Check your Owner's Manual or lexus.com.au/connectivity for explanation of limitations. Please drive safely. ²Product and company names are trademarks of their respective owners. ³Requires compatible device, USB connection or Bluetooth[®] connection for vehicles fitted with wireless CarPlay[®], Android AutoTM mobile data, network reception and GPS signal. Mobile usage at user's cost. Apps subject to change. For details see lexus.com.au/connectivity. Please drive safely. CarPlay[®] is a trademark of Apple, Inc. Android AutoTM is a trademark of Google LLC. Bluetooth[®] is a registered trademark of Bluetooth SIG, Inc. ⁴Only Qi-supported devices compatible. Refer to device manufacturer. May require additional purchase of accessory to support wireless charging. ⁵Driver assist feature. Only operates under certain conditions. Check your Owner's Manual for explanation of limitations. Please drive safely. ⁶Torsen[®] is a registered trademark of JTEKT Corporation.

SPECIFICATIONS

		LBX Morizo RR
Dimensions and Weight (approximate) ¹	Overall Length (mm)	4190
	Overall Width (mm)	1840
	Overall Height (mm)	1535
	Wheelbase (mm)	2580
	Maximum Kerb Weight (kg)	1485
	Gross Weight (kg)	1900
	Tread	Front: 1580 Rear: 1585
	Seating Capacity	5
Chassis	Suspension	Front: MacPherson Strut Type Rear: Double Wishbone
	Steering System	Electric
	Brakes	Front: Ventilated Disc Brake with Fixed Caliper 4-Cylinder Rear: Solid Disc Brake with Floating Caliper 1-Cylinder
	Minimum Turning Radius (m)	Tyre: 5.4m Body: 5.7m
	Fuel Tank Capacity (L)	50
	Tyre Sizes	19" Alloy Wheels - 235/45R19 (Aluminium, Forged)
Engine	Type	G16E-GTS, 1.6L Turbo Petrol
	Maximum Power	206kW, 6500 RPM
	Maximum Torque	390Nm, 3250-4600 RPM
	Fuel System	EFI
	Fuel Consumption (Combined, L/100km) ² Results were achieved under laboratory conditions and do not reflect the fuel consumption in real world driving.	9.2L/100km (Combined)
	CO2 Emission (Combined, g/km) ³ Results were achieved under laboratory conditions and do not reflect the fuel consumption in real world driving.	209 g/km (Combined)



Weights/mass/volumes/dimensions are approximate and subject to individual vehicle variances, and should be confirmed before fitting any accessories, towing or otherwise relying on this value.

¹Weights/mass/volumes/dimensions are approximate and subject to individual vehicle variances, and should be confirmed before fitting any accessories, towing or otherwise relying on this value. ²Results achieved for LBX Morizo RR AWD in ADR81/02 combined drive cycle fuel consumption testing. Urban cycle results achieved 13.4L/100km and extra urban cycle achieved 6.8L/100km. Results were produced using new sample vehicles without fitment of accessories/customisation, and may not be replicable. ³Results achieved for LBX Morizo RR AWD in ADR81/02 combined drive cycle CO2 testing. Urban cycle results achieved 303g/km and extra urban cycle achieved 155g/km. Results produced in laboratory test conditions, using new sample vehicles without fitment of accessories/customisation, and may not be replicable. Overseas model shown. Australian specifications and features may differ. See your Lexus dealer for details. Lexus Australia uses its best endeavours to ensure material is accurate at the time of publishing. All information must be confirmed with your Lexus dealer at the time of ordering, as specifications, applicability and availability may change over time. Colours depicted are a guide only and may vary from actual colours due to the printing/display process. Lexus Australia reserves the right to change and/or discontinue, without notice, models, prices, colours, materials, equipment, specifications. To the extent permitted by law, Lexus Australia will not be liable for any damage or loss incurred from relying on the information and images contained in this material. Distributed nationally by Lexus Australia, a division of Toyota Motor Corporation Australia Limited ABN 64 009 686 097. Proof: L2025-000621. Published: April 2025.